

For more than a century and a half, God has brought First Baptist Church of Tallahassee over many mountains and through many valleys. In all things, His faithfulness has never wavered, and His mercy has remained clear. Although we currently find our church in an interim period searching for a new pastor, we are not an interim church. We are steadfast in our commitment to fulfill the mission of the local church, and we are confident that the Lord will continue to supply us with everything we need to serve Him.

Because we hold the Bible to be God's inspired word and our ultimate authority, First Baptist Church strives to maintain deep and vibrant Bible study within all of the ministry areas of our church, with various opportunities available throughout the week. We also have a strong and historic commitment to missions and sharing the gospel of Jesus with our community and the world. Our members of all ages are directly involved in missions by giving to support national and international missionaries, serving locally to share the love of Jesus, and going on mission trips each year to other states and countries.

As a downtown church located in the heart of our city, we feel a call to serve our entire community. We open our doors to the public during major downtown events and show hospitality to all who use our facilities, provide leadership within our local civic and faith communities, and seek to meet physical needs throughout the area. We also offer specific ministries for every age and stage of life—from preschool to senior adult—through the shared work of our members and pastoral staff.

Lastly, First Baptist Church is a fellowship marked by our passionate worship of the Lord. One of our greatest strengths is that we offer two distinct worship services each Sunday—one traditional and one contemporary—and, as such, draw folks from various generations and with different expressions of worship into one congregation. Each service is committed to worshiping with reverence and excellence, though each is unique in order and music.

As we prepare to begin a new chapter in the life of our church, our hope continues to rest in the love of the Father, the grace of the Son, and the power of the Spirit. May First Baptist Church of Tallahassee always be the church that God has called us to be.

[Josh]

Josh Hall  
Associate Pastor

# Basic Baptist Christian beliefs

## 1) There is only one God

There is one and only one living and true God. He is an intelligent, spiritual, and personal Being, the Creator, Redeemer, Preserver, and Ruler of the universe. God is infinite in holiness and all other perfections. To Him we owe the highest love, reverence, and obedience.

## 2) God exists as a triune God

The eternal God reveals Himself to us as Father, Son, and Holy Spirit, with distinct personal attributes, but without division of nature, essence, or being.

Father - God as Father reigns with providential care over His universe, His creatures, and the flow of the stream of human history according to the purposes of His grace. He is all powerful, all loving, and all wise. God is Father in truth to those who become children of God through faith in Jesus Christ. He is fatherly in His attitude toward all men.

Son - Christ is the eternal Son of God. In His incarnation as Jesus Christ he was conceived of the Holy Spirit and born of the virgin Mary. Jesus perfectly revealed and did the will of God, taking upon Himself the demands and necessities of human nature and identifying Himself completely with mankind yet without sin. He honored the divine law by His personal obedience, and in His death on the cross He made provision for the redemption of men from sin. He was raised from the dead with a glorified body and appeared to His disciples as the person who was with them before His crucifixion. He ascended into heaven and is now exalted at the right hand of God where He is the One Mediator, partaking of the nature of God and of man, and in whose Person is effected the reconciliation between God and man. He will return in power and glory to judge the world and to consummate His redemptive mission. He now dwells in all believers as the living and ever present Lord.

The Holy Spirit - The Holy Spirit is the Spirit of God. He inspired holy men of old to write the Scriptures. Through illumination He enables men to understand truth. He exalts Christ. He convicts of sin, of righteousness and of judgment. He calls men to the Savior, and effects regeneration. He cultivates Christian character, comforts believers, and bestows the spiritual gifts by which they serve God through His church. He seals the believer unto the day of final redemption. His presence in the Christian is the assurance of God to bring the believer into the fullness of the stature of Christ. He enlightens and empowers the believer and the church in worship, evangelism, and service.

Genesis 1:2; Judges 14:6; Job 26:13; Psalm 51:11, 139:7; Isaiah 61:1-3; Joel 2:28-32

Matthew 1:18, 3:16, 4:1, 12:28-32, 28:19; Mark 1:10, 1:12

Luke 1:35, 4:1, 4:18-19, 11:13, 12:12, 24:49; John 4:24, 14:16-17, 14:26, 15:26, 16:7-14

Acts 1:8, 2:1-4, 2:38, 4:31, 5:3, 6:3, 7:55, 8:17, 8:39; Acts 10:44, 13:2, 15:28, 16:6, 19:1-6

Romans 8:9-11, 8:14-16, 8:26-27; 1 Corinthians 2:10-14, 3:16, 12:3-11; Galatians 4:6

Ephesians 1:13-14, 4:30, 5:18; 1 Thessalonians 5:19; 1 Timothy 3:16, 4:1

2 Timothy 1:14, 3:16; Hebrews 9:8, 9:14; 2 Peter 1:21; 1 John 4:13, 5:6-7

Revelation 1:10, 22:17

### **3) God is sovereign**

Since God is the Creator, Redeemer, Preserver, and Ruler of the universe, He has the right, the authority, the control and the power to govern all that happens and what has, is, or will happen being in accordance to His divine will. He has the right to achieve His purposes and has the power to bring about circumstances that dictate whatever He wills to come to pass. He has complete control of everything and there is nothing that is done that is not done by or allowed through His will.

Genesis 1:1, 50:20; 2 Chronicles 20:6; Psalm 115:3;  
John 19:11; Romans 8:28; Ephesians 1:11

### **4) Jesus is the only way to Salvation through His death and resurrection**

Salvation involves the redemption of the whole man, and is offered freely to all who accept Jesus Christ as Lord and Savior, who by His own blood obtained eternal redemption for the believer. In its broadest sense salvation includes regeneration, sanctification, and glorification.

A. Regeneration, or the new birth, is a work of God's grace whereby believers become new creatures in Christ Jesus. It is a change of heart wrought by the Holy Spirit through conviction of sin, to which the sinner responds in repentance toward God and faith in the Lord Jesus Christ. Repentance and faith are inseparable experiences of grace. Repentance is a genuine turning from sin toward God. Faith is the acceptance of Jesus Christ and commitment of the entire personality to Him as Lord and Savior. Justification is God's gracious and full acquittal upon principles of His righteousness of all sinners who repent and believe in Christ. Justification brings the believer into a relationship of peace and favor with God.

B. Sanctification is the experience, beginning in regeneration, by which the believer is set apart to God's purposes, and is enabled to progress toward moral and spiritual perfection through the presence and power of the Holy Spirit dwelling in him. Growth in grace should continue throughout the regenerate person's life.

C. Glorification is the culmination of salvation and is the final blessed and abiding state of the redeemed.

Genesis 3:15; Exodus 3:14-17, 6:2-8

Matthew 1:21, 4:17, 16:21-26, 27:22-28:6; Luke 1:68-69, 2:28-32

John 1:11-14, 1:29, 3:3-21, 3:36, 5:24, 10:9, 10:28-29, 15:1-16, 17:17

Acts 2:21, 4:12, 15:11, 16:30-31, 17:30-31, 20:32

Romans 1:16-18, 2:4, 3:23-25, 4:3, 5:8-10, 6:1-23, 8:1-18, 29-39, 10:9-10, 10:13, 13:11-14

1 Corinthians 1:18, 1:30, 6:19-20, 15:10; 2 Corinthians 5:17-20

Galatians 2:20, 3:13, 5:22-25, 6:15; Ephesians 1:7, 2:8-22, 4:11-16; Philippians 2:12-13  
Colossians 1:9-22, 3:1; 1 Thessalonians 5:23-24; 2 Timothy 1:12; Titus 2:11-14  
Hebrews 2:1-3, 5:8-9; 9:24-28, 11:1-12:8, 12:14; James 2:14-26; 1 Peter 1:2-23; 1 John 1:6-2:11  
Revelation 3:20, 21:1-22:5

## **5) Man**

Man was created by the special act of God, in His own image, and is the crowning work of His creation. In the beginning man was innocent of sin and was endowed by his Creator with freedom of choice. By his free choice man sinned against God and brought sin into the human race. Through the temptation of Satan man transgressed the command of God, and fell from his original innocence; whereby his posterity inherit a nature and an environment inclined toward sin, and as soon as they are capable of moral action become transgressors and are under condemnation. Only the grace of God can bring man into His holy fellowship and enable man to fulfill the creative purpose of God. The sacredness of human personality is evident in that God created man in His own image, and in that Christ died for man; therefore every man possesses dignity and is worthy of respect and Christian love.

Genesis 1:26-30, 2:5, 2:7, 2:18-22, 3, 9:6  
Psalm 1:1-6, 8:3-6, 32:1-5, 51:5; Isaiah 6:5; Jeremiah 17:5  
Matthew 16:26; Acts 17:26-31  
Romans 1:19-32, 3:10-18, 3:23, 5:6, 5:12, 5:19, 6:6, 7:14-25, 8:14-18, 8:29  
1 Corinthians 1:21-31, 15:19, 15:21-22; Ephesians 2:1-22; Colossians 1:21-22, 3:9-11

## **6) The Holy Bible is the inerrant Word of God**

The Holy Bible was written by men divinely inspired and is the record of God's revelation of Himself to man. It is a perfect treasure of divine instruction. It has God for its author, salvation for its end, and truth, without any mixture of error, for its matter. It reveals the principles by which God judges us; and therefore is, and will remain to the end of the world, the true center of Christian union, and the supreme standard by which all human conduct, creeds, and religious opinions should be tried. The criterion by which the Bible is to be interpreted is Jesus Christ.

Exodus 24:4; Deuteronomy 4:1-2, 17:19; Joshua 8:34  
Psalms 19:7-10, 119:11, 119:89, 119:105, 119:140; Isaiah 34:16, 40:8; Jeremiah 15:16, 36:1-32  
Matthew 5:17-18, 22:29; Luke 21:33, 24:44-46; John 5:39, 16:13-15, 17:17; Acts 2:16ff., 17:11  
Romans 15:4, 16:25-26; 2 Timothy 3:15-17; Hebrews 1:1-2, 4:12; 1 Peter 1:25, 2 Peter 1:19-21

## **7) The Church**

A New Testament church of the Lord Jesus Christ is a local body of baptized believers who are associated by covenant in the faith and fellowship of the gospel, observing the two ordinances of Christ, committed to His teachings, exercising the gifts, rights, and privileges invested in them by His Word, and seeking to extend the gospel to the ends of the earth. This church is an

autonomous body, operating through democratic processes under the Lordship of Jesus Christ. In such a congregation members are equally responsible. Its Scriptural officers are pastors and deacons. The New Testament speaks also of the church as the body of Christ which includes all of the redeemed of all the ages.

Matthew 16:15-19, 18:15-20

Acts 2:41-42, 2:47, 5:11-14, 6:3-6, 13:1-3, 14:23, 14:27, 15:1-30, 16:5, 20:28; Romans 1:7

1 Corinthians 1:2, 3:16, 5:4-5, 7:17, 9:13-14, 12

Ephesians 1:22-23, 2:19-22, 3:8-11, 3:21, 5:22-32; Philippians 1:1; Colossians 1:18

1 Timothy 3:1-15, 4:14

## **8) Baptism and Lord's Supper**

Christian baptism is the immersion of a believer in water in the name of the Father, the Son, and the Holy Spirit. It is an act of obedience symbolizing the believer's faith in a crucified, buried, and risen Savior, the believer's death to sin, the burial of the old life, and the resurrection to walk in newness of life in Christ Jesus. It is a testimony to his faith in the final resurrection of the dead. Baptism is an outward expression of an inward decision. Being a church ordinance, it is prerequisite to the privileges of church membership.

The Lord's Supper is a symbolic act of obedience whereby members of the church, through partaking of the bread and the fruit of the vine, memorialize the death of the Redeemer and anticipate His second coming. It is the practice of our church that anyone who confesses Christ as Savior and Lord have the opportunity to receive the elements when passed.

Matthew 3:13-17; 26:26-30, 28:19-20; Mark 1:9-11, 14:22-26

Luke 3:21-22, 22:19-20; John 3:23; Acts 2:41-42, 8:35-39, 16:30-33, 20:7

Romans 6:3-5; 1 Corinthians 10:16, 10:21, 11:23-29; Colossians 2:12

## **9) Priesthood of the believer**

Laypersons have the same right and privilege as ordained ministers to communicate with God, interpret Scripture, minister in Christ's name, and offer spiritual sacrifices.

Ephesians 2:6; Romans 12:1-2, 15:16; Hebrews 13:15-16; 1 Peter 2:1-9; Revelation 1:6

# Mission and Vision

## Mission

Our mission as a church is to be a God-centered, Bible-directed, people-focused, caring body of baptized believers in Jesus Christ; led by the Holy Spirit in worshiping, serving, and sharing Christ, and in equipping believers to carry out the Great Commission in the community and throughout the world.

## Vision

To reach people for Jesus, we will be a church of faithful disciples, connected members, and servant leaders that strengthens homes and impacts our city.

## GOALS

- Faithful Disciples We will think, act, and be like Jesus, fully surrendered to Him as Lord. (Matthew 28:19-20)
- Connected Church As members of the body of Christ, we will actively participate in worship, learn and use our spiritual gifts, and care for and communicate with one another. We will share Christ’s message with our community. (Acts 2:42-47)
- Servant Leaders More people will embrace leadership roles in the congregation and community, use their spiritual gifts to build the body of Christ, serve in places of work and study, and respond to God’s call to service. (John 13:1-20)
- Strong Homes By placing Jesus at the center of our homes, we will be mission outposts in the community. We will be families on mission to reach people for Jesus. (Mark 10:7-9)
- Impacted City We will care for those in need by sheltering children, working for racial harmony, and partnering with other groups to transform Tallahassee through the love of Christ. (Matthew 25:31-46)

## Who We Are

First Baptist Church of Tallahassee has a long and illustrious history of ministering to the people in the Tallahassee area and around the world. With more than 1750 active members, we are proud of our past and we have a hope for many more years of spreading the gospel of Jesus Christ to the world around us. We are a praying, faithful fellowship with great preaching that is relevant to current issues.

Our congregation has a choice of contributing to the Southern Baptist Convention, the Cooperative Baptist Fellowship, both, or neither. We also provide the opportunity to contribute to First Baptist Church of Tallahassee only. With these options our congregation supports the missions of both the SBC and the CBF, as well as local needs around Tallahassee and around the world. Over 20 years ago our congregation adopted this approach of dual alignment in a wise and prayerful decision. The result has been a unified body of believers that has continued to be a loving, compassionate fellowship with excellent Bible studies and a heart for missions.

We are a regional church involved in many activities in the community and around the world, but we are also a downtown church that is here for life, with a great staff that loves the Lord and makes everyone feel at home. Many people within our community know us as the church that frequently opens its doors to the public during major downtown events so local residents and visitors can take advantage of our wonderful facilities and hospitality – from a comfortable space to take a break from the outside conditions to restrooms and baby-changing areas!

Our members are a compassionate, friendly, and welcoming body of believers who are committed, courageous, and proactive doers of God's word. We are diverse, loving, evangelistic, service-oriented, giving, nonjudgmental, and mission-minded. First Baptist Church has been described as "the church that is not afraid to take action".

First Baptist Church is a Bible-based church with many great programs and ministry areas. Many of our members are here because of a strong bond of Christian fellowship, the quality and depth of our Bible study ministries, the committed and spirit-filled staff, the strong Bible-based preaching, and the opportunity to become involved in any number of mission outreach and in-reach activities. Others came and remain at First Baptist Church because of our great music, children's, youth, and college ministries. Still others are here because members of their family have found a warm and caring home, or simply because a friend, co-worker, or staff member invited them to attend.

# Church History and Our Heritage

In 1849, the Tallahassee population had grown to almost 1,800 men, women, and children. From this diverse population, four men and five women organized the Baptist Church of Tallahassee. Of these nine original members, one was to become governor and another state comptroller.

Throughout our 167 year history many members have occupied positions of leadership in private business and industry as well as in the public sector, including governors, university presidents, college deans, professors, coaches, judges, legislators, commissioners, and mayors. The first church building was situated on the south side of College Avenue on a lot purchased for \$500. With missionary pastors sent from the Home Mission Board, the membership grew until the Civil War began. There was no post-war record of ministry until 1880, when Rev. A.C. McCants was sent to lead the church.

In September 1894 the name of the church was changed to The First Baptist Church of Tallahassee, and from meager purses the building was remodeled, refinished, and reoccupied in January 21, 1900. With a membership of 407, a new church structure was dedicated in November 1915 with the coming of Pastor-builder J. Dean Adcock. First Baptist Church continued to serve the needs of the Tallahassee community in the 1920s and 1930s. But the 1940s brought an influx of World War II personnel. When the Florida State College for Women became the co-educational Florida State University, students were filling every service and it was time to build again. Dr. Harold G. Sanders led us through an eight year building program that ended with the completion of our second century church in 1957.

In the subsequent years, First Baptist Church recognized the need for additional churches in Tallahassee and responded by establishing six mission churches. Additional structures were also added to our existing location under the guidance of Dr. Robert W. McMillian, including construction of a multi-purpose Christian Life Center in 1974 and administrative offices in 1987. Additional buildings were also purchased in 1998 for future expansion.

During the end of the twentieth century, we gave prayerful consideration to relocating our church. During that time of discernment, we waited on God for direction regarding our place of future ministry. We concluded a study in 2009 and came to the decision that our present location is where God wants us to be for as long as Jesus tarries. Today, we proudly state that we are *here...for life*, and we embrace that calling joyfully and hopefully.

In 2015, the church adopted a 5 year strategic plan after much prayer and discussion. This plan, set to carry us to the year 2020, will align our focus as a church on these five goals: Connected Church, Faithful Disciples, Impacted City (Missions), Servant Leaders and Strong Homes.



Tallahassee is abuzz with talk of a revitalization of our downtown area, and we have come to an even clearer conviction that God is calling FBC to be the cornerstone of that community effort. We are to be here ...for life.

No other community organization can substitute for us in testifying to the abundant life Jesus gives. We believe that God called us to pursue a phased renovation of our entire campus so that we might be able to offer first century ministry in a twenty first century context that meets the spiritual needs of every generation and life stage. In August 2009, we adopted a set of recommendations for Phase I of our plan, to include roof repairs, renovations to the Fellowship Hall and Christian Life Center as well as the Children's and Youth Ministry areas. In addition, our plan included a brand new Welcome Center and Atrium that serve as a connecting point for all of our buildings. In August 2011, we completed all of the Phase I plans, and we began utilizing all of our new and renovated facilities.

#### Past Pastors

- Rev. J. T. Zaly (1849-1852)
- Rev. W. W. Childers (1854-?)
- Rev. J. C. Long
- Rev. A. C. McCants (1880-1886)
- (No record of Pastor 1886-1892)
- Rev. S. M. Provence (1892-1902)
- Dr. Frank W. Cramer (1902-1906)
- Rev. J. B. Pruitt (1907-1911)
- Dr. J. Dean Adcock (1911-1919)
- Dr. Bunyan Stephens (1919-1929)
- Dr. Strother Campbell (1929-1934)
- Dr. Luther Rice Christie (1934-1939)
- Dr. Pierce S. Ellis (1940-1945)
- Dr. Harold G. Sanders (1946-1961)
- Dr. C. A. Roberts (1962-1967)
- Rev Douglas Watterson (1967-1971)
- Dr. Robert M. McMillan (1972-1987)
- Dr. Jim Chavis (1988-1993)
- Dr. J. Douglas Dortch, Jr. (1994-2011)
- Dr. William Shiell (2013-2016)

# Areas of Ministry

Ministry at First Baptist Church Tallahassee occurs both at an internal level within the church membership as well as at an external level on local/state, national, and international levels. First Baptist Church provides Bible teaching and child care for preschool children and also provides Bible study and worship for elementary, middle and high school students, college students, internationals, and adults on Sundays as well as other opportunities in weekday options (small groups, mid-week Bible study, Royal Ambassadors, Girls in Action, and children, youth, adult and senior adult choirs.)

Our early service each Sunday is interpreted for the hearing-impaired. The church records its Sunday morning service for broadcast over a local TV station and for viewing on the church web site; we also provide DVDs of services to our homebound members. Our prayer ministry is facilitated by a current prayer list available for our mid-week Wednesday evening service as well as by an e-mailed list that goes to all subscribing members. A benevolence fund also exists to assist church members and non-church members needing financial assistance.

Available to both church members and the public is the church's Downtown Fitness and other recreational programs (fitness classes, basketball, racquetball, and volleyball facilities) available in our Christian Life Center. The church operates a Weekday Early Education facility which is available to both church members and the many State of Florida and other downtown employees who work in close proximity to the church.

Since 2003 in a program known as First Love, First Baptist has annually coordinated a large team of hundreds of volunteers including church members, fraternity and sorority members, and other local volunteers in a Saturday community wide blitz of service to local non-profit organizations and individuals needing assistance. Projects range from wheelchair ramps to yard work to home repairs to singing at assisted living facilities and other community services. Since 2013, First Baptist (along with St. John's Episcopal Church) has been participating in Second Harvest of the Big Bend's Full Summer program which produces packaged meals for students who do not receive free or reduced cost breakfast and lunch meals outside of the school year. First Baptist also partners with Sabal Palm elementary school.

Since 2010, shortly after a major earthquake in Haiti, First Baptist has sent a team there each year to provide assistance in the form of humanitarian and construction aid, mentoring, discipleship training, evangelistic outreach and English language training. Our work there has been facilitated through the Joy House (based in Arkansas). One of our church members has also led an effort since the year 2000 to provide funding assistance to the Christian University of Northern Haiti to assist its music program and to develop leadership skills.

Since 1992, First Baptist has participated with a Birmingham, Alabama organization known as Builders For Christ, to send a team to assist Southern Baptist churches, primarily in the northeast and midwest where church resources are limited, to assist with the construction of church buildings.

Since 2000, First Baptist has sent middle and high school students on a Youth Choir Mission Trip to various parts of the country. This missions experience allows the Youth Choir to lead in worship in

diverse locations while allowing members of the Youth Choir to share Christ's love with many that are in need of His touch. With opportunities ranging from soup kitchens to assisted living facilities to sites for mentally challenged adults and children, each location is an opportunity for participants to engage with people and to step out in service to be the hands and feet of Christ.

First Baptist's 2016 budget also provides funds to support organizations including Fellowship of Christian Athletes, A Women's Pregnancy Center, Bill Glass Prison Ministry, Chelsea House, the local Florida Baptist Association of Southern Baptist churches, the local campus of the Florida Baptist Children's Home, Haiti Music School, The Shelter, ECHO and Touching Miami With Love.

Church members have the option of designating a portion (9% in 2016) of their tithes and offerings to assist either the Southern Baptist Convention or the Cooperative Baptist Fellowship (or both) programs which fund seminary education, missionaries, and their other programs (or designating the 9% to remain in the First Baptist Church budget). In the fiscal year ending June 2015, members that designated their tithes and offerings gave this 9% as follows: Remain in First Baptist budget – 50.4%, Southern Baptist Convention – 27.11%, and Cooperative Baptist Fellowship – 22.49%.

**Follow this with a page of pictures of ministry activities.**

# Worship and Music

The music ministry of First Baptist Church touches every age group and every member of the congregation in some way. Its mission is to inspire, educate, train and lead the congregation to worship, honor, and glorify God the Father, Jesus Christ the Son, and the Holy Spirit, the Counselor, through both active and passive participation in music. In order to establish connection with every age and every taste, many different genres and styles of music are used. The importance of text and excellence in composition and presentation is stressed over a particular style or genre. Every piece of music employed must either inspire, tenderize, or comfort the soul, teach the mind, and/or stir the heart of the listener and participant towards God.

The music ministry of First Baptist is inclusive. Given the many, many references to participating in music found in Holy Scripture, we believe that all people are called to worship God through music either as an active and grateful listener or as a faithful participant and creator of music. We further believe that the church is called to sing and that singing serves a strong and vital spiritual purpose when the church gathers for corporate worship.

Toward these ends, the music ministry of First Baptist encompasses the following groups and their related purposes and mission.

**Children's Choirs – age 3 – 5<sup>th</sup> Grade**

**Youth Choir – 6<sup>th</sup> – 12<sup>th</sup> Grade**

**Praise Team – College students – Young adults**

Provides worship leadership for the contemporary service through auditioned singers and a wide variety of instrumentalists.

**Sanctuary Choir – College students – Senior adults**

Provides worship leadership for the traditional service using many styles and genres.

**Chamber Players – College students – Senior adults**

Chamber-sized orchestra that leads in traditional worship.

**First Joy Senior Adult Choir – Senior adults**

Other places of musical service which have similar purpose and mission to the groups listed previously:

Handbell Choir

First Brass (brass quintet)

FBC Chordsmen (gospel quartet)

Solo Ministry

# Church Structure and Administration

## Church Officers and Board of Trustees

Church Officers include the Pastor, Deacons, Trustees, Director of Sunday School, Director of Woman's Missionary Union, Clerk, Treasurer, other Ministers on staff, and such other officers as the Church may designate from time to time. The Board of Trustees consists of no fewer than 5 Trustees.

## The Deacons

There are 60 active Deacons of the Church, 15 of whom are elected each year for a term of 4 years by the Church membership in regular business meeting; plus Honorary Life Deacons as provided by the church by-laws.

## Committees

### Administrative:

Budget and Finance  
Endowment  
Missions  
Personnel  
Property and Maintenance  
Security  
Weekday Early Education

### Goal:

Strategic Coordinating Committee  
Connected Church  
Faithful Disciples  
Impacted City (Missions)  
Servant Leaders  
Strong Homes

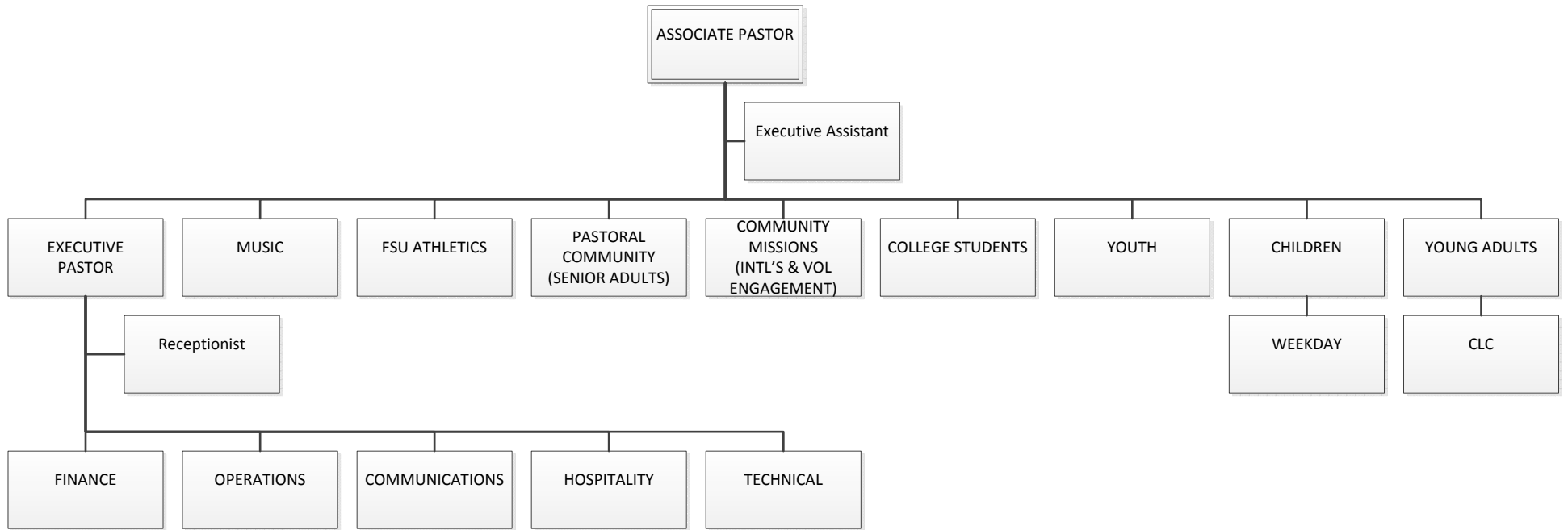
## Ministry Groups:

Baptismal	Lords Supper
Community Relations	Music
Counting	Security and Parking
Deaf	Seminary Scholarship
Flower/Decorations	Stewardship
Hospital/Homebound	Ushers/Greeters
Hospitality	Wedding
Library Services	Women's In-Reach/Discipleship

## Areas of Ministry

Children	Deaf
Youth	Music
College	Prayer
Single Adults	Recreation and Fitness
Young Adults	Weekday Education
Adults	Women
Senior Adults	WorkFaith
Internationals	

# Interim Organizational Chart



**First Baptist Church of Tallahassee**

	<u>2006</u>	<u>2007</u>	<u>2008</u>	<u>2009</u>	<u>2010</u>	<u>2011</u>	<u>2012</u>	<u>2013</u>	<u>2014</u>	<u>2015</u>
Tithes & Offerings	\$ 2,738,387	\$ 2,669,796	\$ 2,662,268	\$ 2,461,978	\$ 2,454,115	\$ 2,249,154	\$ 2,323,120	\$ 2,608,019	\$ 2,794,133	\$ 2,722,707
Other receipts - general fund	116,453	145,628	126,570	121,182	111,106	1,062,298	79,154	123,986	71,973	60,594
Designated receipts and capital campaign	710,841	1,134,402	2,864,638	3,577,837	1,933,103	7,396,846	1,206,264	2,311,535	941,662	1,337,277
Weekday Education receipts	882,990	803,751	713,881	807,623	790,034	715,990	883,894	1,020,845	1,085,640	1,162,157
Food Service receipts	N/A	N/A	N/A	N/A	N/A	148,231	146,501	197,222	195,821	196,964
Christian Life Center receipts	95,324	99,475	97,051	80,769	71,531	65,312	63,309	63,382	58,033	76,476
<b>Total receipts</b>	<b>\$ 4,543,996</b>	<b>\$ 4,853,052</b>	<b>\$ 6,464,408</b>	<b>\$ 7,049,390</b>	<b>\$ 5,359,890</b>	<b>\$ 11,637,831</b>	<b>\$ 4,702,242</b>	<b>\$ 6,324,989</b>	<b>\$ 5,147,261</b>	<b>\$ 5,556,175</b>
Cash balance	\$ 665,227	\$ 662,344	\$ 2,302,658	\$ 3,854,472	\$ 877,909	\$ 1,328,205	\$ 974,285	\$ 913,909	\$ 430,216	\$ 724,661
Endowment fund balance	\$ 777,437	\$ 875,149	\$ 698,681	\$ 770,872	\$ 819,047	\$ 1,128,984	\$ 1,194,039	\$ 1,247,277	\$ 1,345,751	\$ 1,386,659
<b>Debt at 12/31</b>										
Note payable	\$ -	\$ -	\$ -	\$ -	\$ -	\$ 1,977,150	\$ 1,425,000	\$ 1,125,000	\$ 1,119,549	\$ 1,085,699
Line of credit	-	-	-	-	-	250,000	-	-	100,000	400,000
Due to endowment fund	-	-	-	-	-	300,000	300,000	300,000	300,000	300,000
<b>Total Debt</b>	<b>\$ -</b>	<b>\$ -</b>	<b>\$ -</b>	<b>\$ -</b>	<b>\$ -</b>	<b>\$ 2,527,150</b>	<b>\$ 1,725,000</b>	<b>\$ 1,425,000</b>	<b>\$ 1,519,549</b>	<b>\$ 1,785,699</b>

For more than 150 years, First Baptist Church of Tallahassee has had a significant impact on the spiritual life of Florida's capital city. As shown above, Church receipts have been strong over the last decade, and were highlighted by a successful "Here for Life" capital campaign of more than \$9 million. Major renovations and construction of a new Welcome Center were completed in 2011. The total project cost of \$10.6 million was funded primarily by the capital campaign and required debt acquisition significantly below the projected amount.

# FBC Demographics

- 1) Number of Baptisms for the **last four years (98 total)**.
  - a. 2012 - **17**
  - b. 2013 - **13**
  - c. 2014 - **40**
  - d. 2015 - **28**
  
- 2) Number of new members by Transfer of letter/Statement of Faith for the **last four years (303 total)**.
  - a. 2012 - **31**
  - b. 2013 - **109**
  - c. 2014 - **96**
  - d. 2015 - **67**
  
- 3) The Sunday Morning Bible Study membership breakdown by age categories (as of 6/5/2016)
  - a. Preschool **143**
  - b. Children **171**
  - c. Youth **259**
  - d. College **276**
  - e. Adults **911**
  
- 4) Sunday Morning Bible Study Attendance **592.8 4 year average**
  - a. 2012 - **600**
  - b. 2013 - **625**
  - c. 2014 - **675**
  - d. 2015 - **471**
  
- 5) Worship Services Attendance **902.5 4 year average**
  - a. 2012 - **775**
  - b. 2013 - **850**
  - c. 2014 - **1,020**
  - d. 2015 - **965**
  
- 6) Up to 24 different countries are represented in the International Ministry during the University semesters.
  
- 7) Breakdown of the Mission Giving 2015
  - a. Lottie Moon - **\$20,821.00**
  - b. Annie Armstrong - **\$6,853.50**
  - c. CBF Spring Missions - **\$3,122.50**
  - d. CBF Winter Missions - **\$7,275.50**



- e. Maguire State - **\$4,916.00**
  - f. First Baptist initiated missions activities - **\$35,000.00**
- 8) Number of Visitors in 2015 – **453**.

# Tallahassee and Big Bend Area

[https://en.wikipedia.org/wiki/Tallahassee,\\_Florida#cite\\_note-GR1-1](https://en.wikipedia.org/wiki/Tallahassee,_Florida#cite_note-GR1-1)

**Tallahassee** is the capital of the U.S. state of Florida. It is the county seat and only incorporated municipality in Leon County, and is the 126th largest city in the United States. Tallahassee became the capital of Florida, then the Florida Territory, in 1824. In 2010, the population was 181,376, and the Tallahassee metropolitan area is 375,751 as of 2014. Tallahassee is the largest city in the Northwest Florida region.

Tallahassee is home to Florida State University, ranked the nation's forty-third best public university by U.S. News & World Report. It is also home to the Florida A&M University, one of the country's largest historically black universities by total enrollment. Tallahassee Community College is a large community college which serves mainly as a feeder school to both Florida State and Florida A&M. Tallahassee qualifies as significant college town with a student population exceeding 70,000.

Tallahassee is a center for trade and agriculture in the Big Bend region and Southwest Georgia and is served by Tallahassee International Airport and Interstate 10. As a capital city, Tallahassee is home to the Florida State Capitol, Supreme Court of Florida, Florida Governor's Mansion, and nearly 30 state agency headquarters. The city is also known for its large number of law firms, lobbying organizations, trade associations and professional associations, including the Florida Bar and the Florida Chamber of Commerce. It is also a recognized regional center for scientific research, and home to the National High Magnetic Field Laboratory.

## History

During the 17th century several Spanish missions were established in the territory of the Apalachee to procure food and labor for the settlement at St. Augustine. The largest, Mission San Luis de Apalachee, has been partially reconstructed by the state of Florida. The name "Tallahassee" is a Muskogean Indian word often translated as "old fields" or "old town", and it likely stems from the Creek (later called Seminole) Indians who migrated from Georgia and Alabama to this region in the late 18th and early 19th centuries. They found large areas of cleared land previously occupied by the Apalachee tribe. Earlier, the Mississippian Indians built mounds near Lake Jackson around AD 1200, which survive today in the Lake Jackson Archaeological State Park.

The expedition of Pánfilo de Narváez encountered the Apalachees, although it did not reach the site of Tallahassee. Hernando de Soto and his expedition occupied the Apalachee town of Anhaica in what is now Tallahassee in the winter of 1538–1539. Based on archaeological excavations this site is now known to be located about 0.5 miles (800 m) east of the

present Florida State Capitol. The DeSoto encampment is believed to be the first place Christmas was celebrated in the continental United States.

During the First Seminole War, General Andrew Jackson fought two separate skirmishes in and around Tallahassee. The first battle took place on November 12, 1817. Chief Neamathla, of the village of Fowltown, just west of present day Tallahassee had refused Jackson's orders to relocate. Jackson responded by entering the village, burning it to the ground, and driving off its occupants. The Indians later retaliated, by killing 50 soldiers and civilians. Jackson reentered Florida in March 1818. According to Jackson's adjutant, Colonel Robert Butler, they "advanced on the Indian village called Tallahassee (sic) [where] two of the enemy were made prisoner.]"

## Geography and Climate

Tallahassee has an area of 98.2 square miles (254.3 km<sup>2</sup>), of which 95.7 square miles (247.9 km<sup>2</sup>) is land and 2.5 square miles (6.5 km<sup>2</sup>) (2.59%) is water.

Tallahassee's terrain is hilly by Florida standards, being located at the southern end of the Red Hills Region, just above the Cody Scarp. The elevation varies from near sea level to just over 200 feet (61 m), with the state capitol on one of the highest hills in the city. The city includes two large lake basins, Lake Jackson and Lake Lafayette, and borders the northern end of the Apalachicola National Forest.

The flora and fauna are similar to those found in the mid-south and low country regions of South Carolina and Georgia. The palm trees are the more cold-hardy varieties like the state tree, the *Sabal palmetto*. Pines, magnolias, hickories, and a variety of oaks are the dominant trees. The Southern Live Oak is perhaps the most emblematic of the city.

Tallahassee has a humid subtropical climate (Köppen *Cfa*), with long summers and short, mild winters, as well as drier springs and autumns. Summers here are hotter than in the Florida peninsula and it is one of the few cities in the state to occasionally record temperatures above 100 °F (37.8 °C), averaging 2.4 days annually. The record high of 105 °F (41 °C) was set on June 15, 2011.

Summer is characterized by brief intense showers and thunderstorms that form along the afternoon sea breeze from the Gulf of Mexico. The daily mean temperature in July, the hottest month, is 82.0 °F (27.8 °C). Conversely, the city is markedly cooler in the winter, with a January daily average temperature of 51.2 °F (10.7 °C). In addition, as Tallahassee straddles the boundary between USDA Hardiness Zones 8B and 9A, the coldest temperature of the season is typically around 20 °F (−7 °C). During the Great Blizzard of 1899 the city reached −2 °F (−19 °C), the only recorded sub-zero Fahrenheit reading in Florida.

Snow and ice are rare in Tallahassee. Nonetheless, over the last 100 years the city has recorded some accumulating snowfalls; the heaviest was 2.8 inches (7.1 cm) on February 13, 1958.

A White Christmas occurred in 1989, and during the March 13–14, 1993 eastern U.S. "superstorm", there were high winds and traces of snow. Historically, the city usually records at least flurries every three to four years, but on average, measurable amounts of snow 1.0 inch (2.5 cm) occur only once every 17 years. The last measurable snowfall took place December 22–23, 1989. The natural snow line (regular yearly snowfalls) ends 200 miles (320 km) to the north at Macon, Georgia, but the city averages 32 nights where the temperature falls below freezing, and, on average, the first freeze occurs on November 20, the last on March 22.

Although several hurricanes have brushed Tallahassee with their outer rain and wind bands, in recent years only Hurricane Kate, in 1985, has struck Tallahassee directly. The Big Bend area of North Florida sees several tornadoes each year during the season, but they are generally weak, cause little structural damage, and rarely hit the city directly. The most recent tornado to hit Tallahassee occurred on April 19, 2015. The tornado was classified as an EF1, and created a path as wide as 350 yards for almost 5 miles near Maclay Gardens. Damage included numerous downed tree limbs and a car crushed by a falling tree. During extremely heavy rains, some low-lying parts of Tallahassee may flood, notably the Franklin Boulevard area adjacent to the downtown and the Killlearn Lakes subdivision (which is not within the city limits proper) on the north side.

# How Others See First Baptist Church Tallahassee

..."What my players got to see was some coaches come to know Christ, God's people in action, and the love God had for all of them. I am forever thankful for the influence which Tallahassee churches had on these young men."

**Bobby Bowden**, Retired head football coach, Florida State University

..."FBC has stood as a beacon on a hill in Tallahassee for many years. It is a haven for college students as well as for all others who are associated with it. I cannot tell you how influential it has been, not only for me, but to my wife and both of our sons."

**Bill Roland**, Former member First Baptist Church, Tallahassee

..."FBC is a warm, wonderful, welcoming church that has built quite positively upon its historic role in the Tallahassee community. First Baptist Church has been a leading force in creating better interfaith community relations, and works to create a place where people truly do care about each other despite various differences."

**Rabbi Jack Romberg**, Temple Israel, Tallahassee

... "FBC has demonstrated a commitment to being deeply rooted in our city and has made a special effort to build bridges with Florida A&M. That commitment to FAMU students and staff is exemplified and codified by the welcoming spirit that embraces them through attendance and membership at FBC."

**Dr. Elmira Mangum**, President FAMU

... "The community college is unique in that it provides educational opportunities for every age group. FBC has developed an evangelistic approach that reaches out to all of them and not only opens the door to them but escorts them through the door to find spiritual direction and a lifetime fulfillment regardless of age or stage of life. Truly a lighthouse for this community."

**Donna Callaway**, Chair, Tallahassee Community College Board of Trustees